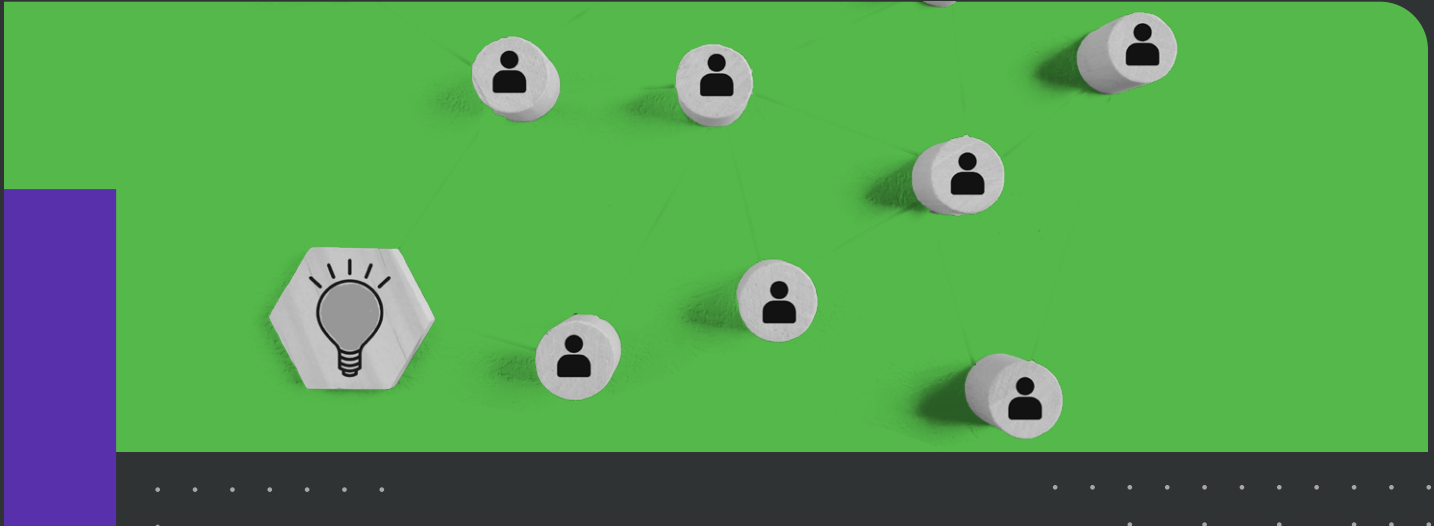




Caseware IDEA Training Catalogue

Data Analytics Solutions



Caseware IDEA Training

- Caseware International offers a wide range of IDEA training courses online that are easy to access and approachable for all users. These hands-on courses have been designed for data analysts at every level. Our industry experts guide participants through real-life examples, case studies, and exercises in IDEA with each course offering CPE credits.

Public and Private Online Training Sessions

- Caseware offers public and private online training sessions year round. IDEA users can now register for online public training sessions at the click of a button using our online training calendar.
- Private training sessions can be customized to cover any course topic. Our industry experts will work with you to tailor each session to meet your team's needs.

For bulk purchases or more information, please contact IDEATraining@caseware.com

Table of Contents

Essentials 1

- AS101 Introduction to IDEA
- CI101 IDEA Data Analysis Level 1
- CI102 IDEA Data Analysis Level 2
- CI201 IDEA Data Analysis CIDA Exam Preparation

Applications 2-3

- AS201 Mastering Problem Imports in IDEA
- AS205 Building Complex Equations in IDEA
- AS210 Standardizing Data in IDEA
- AS250 Analyzing Travel and Entertainment in IDEA
- AS260 Analyzing Accounts Payable in IDEA
- AS261 Analyzing Accounts Receivable in IDEA
- AS262 Analyzing Inventory in IDEA

Process Automation 4

- CI103 Intro to Programming
- CI104 IDEAScript for Analysts Level 1
- CI105 IDEAScript for Analysts Level 2

Fraud 5

- FA101 Detecting Fraud Using Data Analysis
- FA102 Detecting Fraud in Purchasing and Payables
- FA103 Detecting Fraud in Payroll and Human Resources
- FA104 Sharpen Your Forensic Investigation Skills



Essentials

AS101 Introduction to IDEA

Info: This half-day course provides an in-depth overview of the data analysis functionality within the platform, including indexing, summarizing, joining, and filtering.

Prerequisites: none

CPE: 4

CI101 IDEA Data Analysis Level 1

Info: This two-day introductory course acquaints users with IDEA's functionality and wide range of tools. Topics include adding and manipulating fields, building equations, importing data, using multiple databases, reconciling data, identifying irregularities, isolating records, and sampling.

Prerequisites: none

CPE: 16

CI102 IDEA Data Analysis Level 2

Info: This two-day course is designed for experienced users to cover advanced skills in IDEA. Topics include advanced imports, advanced extractions, creating complex equations and custom functions, connecting multiple databases, and introduction to process automation in IDEA.

Prerequisites: CI101

CPE: 16

CI201 IDEA Data Analysis CIDA Exam Preparation

Info: This is a one-day course that will prepare attendees to take the Certified IDEA Data Analyst (CIDA) exam. Attendees will review the core components of IDEA while working through a case study to simulate the style and content that is incorporated in the exam.

Prerequisites: CI101 and CI102

CPE: 8

Applications



AS201 Mastering Problem Imports in IDEA

Info: This half-day course provides experienced IDEA users with advanced knowledge of importing print reports, PDF files, difficult Excel files, and delimited text files into IDEA using the Report Reader.

Prerequisites: CI101 & Report Reader Tutorial Pre-Work

CPE: 4

AS205 Building Complex Equations in IDEA

Info: This half-day course is ideal for experienced users who want to expand their knowledge of utilizing IDEA @Functions and embedded equations to solve complex testing procedures.

Prerequisites: Intro to IDEA

CPE: 4

AS210 Standardizing Data in IDEA

Info: This is a half-day course for intermediate IDEA users that guides attendees through importing raw data from a range of sources and platforms then through preparing and standardizing data to perform in-depth analysis.

Prerequisites: Intro to IDEA

CPE: 4

AS250 Analyzing Travel and Entertainment in IDEA

Info: This half-day course covers the entire process of travel and entertainment from start to finish, from fraud and abuse to clerical errors and loss prevention.

Prerequisites: Intro to IDEA

CPE: 4

Applications



AS260 Analyzing Accounts Payable in IDEA

Info: This half-day course walks attendees through an Accounts Payable audit and reviews the potential tests that can be used to address associated risks by using IDEA to profile payments, extract unusual transactions, apply Benford's Law, and more.

Prerequisites: Intro to IDEA

CPE: 4

AS261 Analyzing Accounts Receivable in IDEA

Info: This half-day course walks attendees through an Accounts Receivable audit and reviews the potential tests that can be used to address associated risks through verifying totals, sampling, aging, recalculating and identifying unusual transactions.

Prerequisites: Intro to IDEA

CPE: 4

AS262 Analyzing Inventory in IDEA

Info: This half-day course walks attendees through an Inventory Review and reviews the potential tests that can be used to address associated risks by checking adequacy and accuracy of inventory, assessing re-ordering systems, and analyzing profit margins and pricing.

Prerequisites: Intro to IDEA

CPE: 4



Process Automation



CI103 Intro to Programming

Info: This two-day course is designed for those who have little to no knowledge of programming and provides an introduction to both programming and IDEAScript.

Prerequisites: CI101 and CI102

CPE: 16

CI104 IDEAScript for Analysts Level 1

Info: This two-day course guides users through the integration of programming concepts and the IDEAScript syntax. Topics covered include how to create a script, objects needed for joins or summarizations and customizable inputs.

Prerequisites: CI101, CI102, and CI103*

* It is recommended that you are both competent in IDEA® and fundamental programming.

CPE: 16

CI105 IDEAScript for Analysts Level 2

Info: This two-day advanced course guides users in creating a wide range of custom applications through IDEAScript Editor. Users will work through error handling, validation, and obtaining custom data from users or databases.

Prerequisites: CI101, CI102, CI103, and CI104

CPE: 16

Fraud



FA101 Detecting Fraud Using Data Analysis

Info: This one-day course guides participants through the fundamentals of fraud detection by applying data analysis techniques to case studies. Participants will be guided to identify and address fraud or fraud risks as they would be encountered in the field.

Prerequisites: Intro to IDEA

CPE: 8

FA102 Detecting Fraud in Purchasing and Payables

Info: This one-day course guides participants through exercises and case studies to identify fraud involved in purchasing and payables. Users will be guided to create logical extractions to target symptoms of fraud, such as false vendors or intentional overcharges.

Prerequisites: Intro to IDEA

CPE: 8

FA103 Detecting Fraud in Payroll and Human Resources

Info: This one-day course will guide users through logic necessary to detect fraud and fraud risks in payroll and HR. Participants will perform exercises and walk through real world examples using IDEA to identify problematic and unusual patterns.

Prerequisites: Intro to IDEA

CPE: 8

FA104 Sharpen Your Forensic Investigation Skills

Info: This one-day course challenges users to incorporate advanced data analytic techniques in their forensic investigations to uncover anomalies and vulnerabilities.

Prerequisites: Intro to IDEA

CPE: 8

Caseware International Inc.

351 King St E, Suite 1100
Toronto, ON M5A 2W4,
Canada

T +1 416 867 9504
F +1 416 867 1906
E info@caseware.com

www.caseware.com